



Project/Client	Indevin Winery
Location	Hawkes Bay, NZ
Architect	GHD
Project Manager	Apollo Projects Ltd
Panel Contractor	Apollo Projects Ltd
Panel(s)/Colour(s)	Walls: KS1000AWP (Architectural) <i>Moonstone, Hamlet, Basalt</i> KS1100 CS (Cool Store)
	Roof: KS1000RW (Trapezoidal) <i>Surfmist</i>

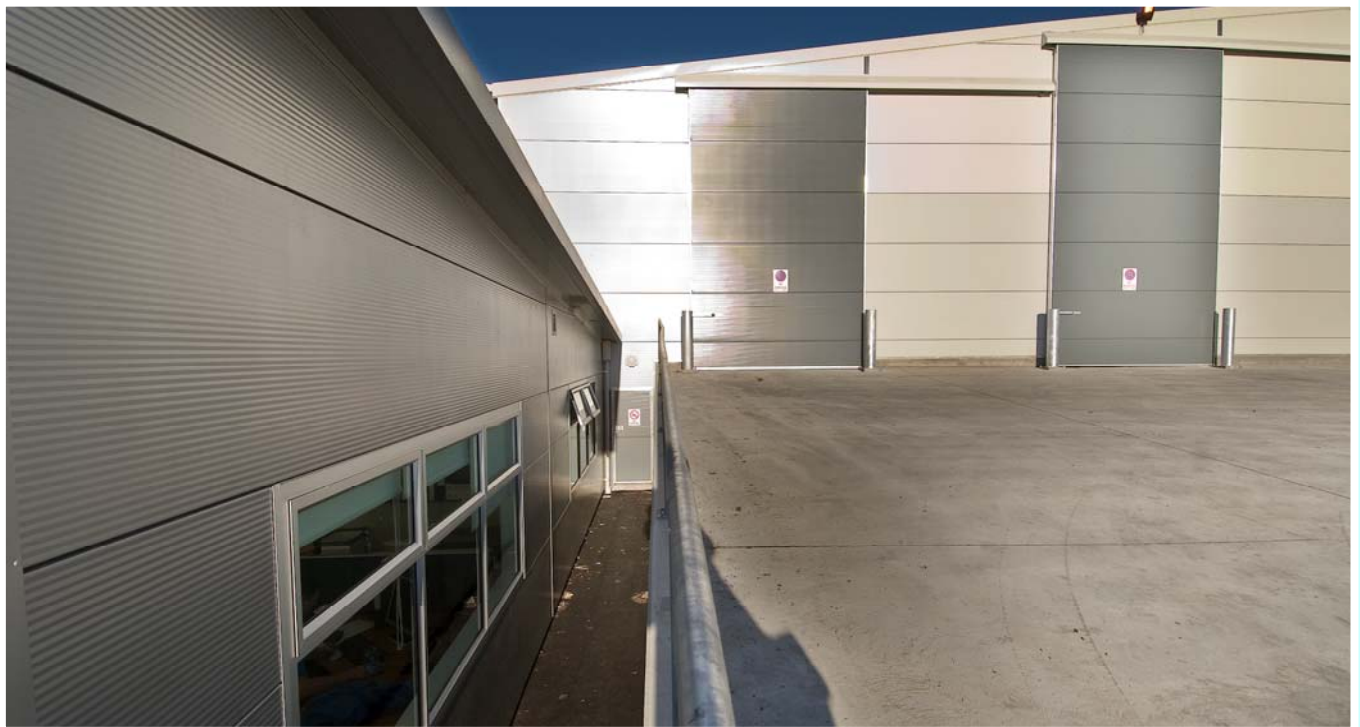
## Case Study



**FIREsafe™** **FIBREfree** **ECOsafE** **AQUAsafe**



# Indevin Winery, Hawkes Bay



Kingspan reserve the right to amend product specifications without prior notice. The information, technical details and fixings advice are given in good faith but are intended as a guide only. For further information please contact Kingspan Insulated Panels

**For more details contact Kingspan:**  
Kingspan Insulated Panels  
**Tel:** 03 358 7536 **Fax:** 03 358 7539  
**Email:** [infoNZ@kingspan.co.nz](mailto:infoNZ@kingspan.co.nz)  
[www.kingspan.co.nz](http://www.kingspan.co.nz)



  
Insulated Panels