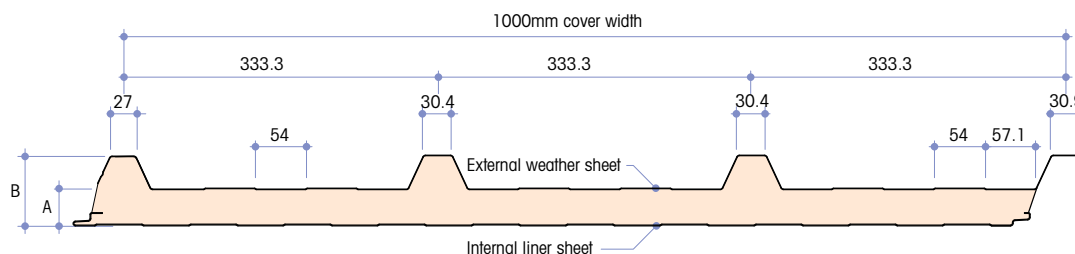
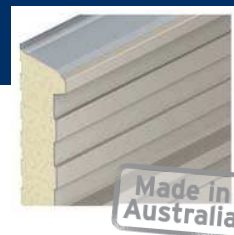
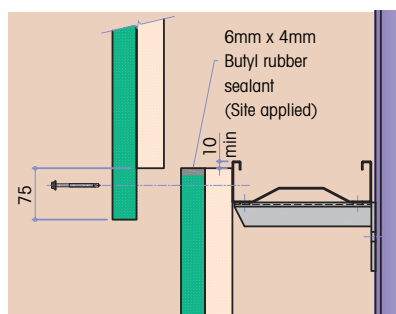


Insulated trapezoidal wall panel system - KS1000 RW

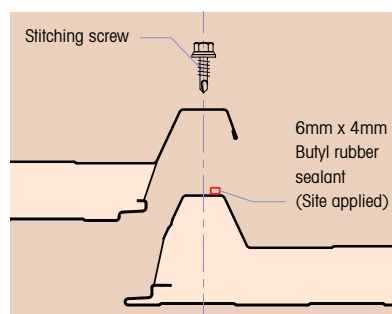


A - Core thickness (mm)	30	40	60	100
B - Overall dimensions (mm)	65	75	95	135
R-Value (m ² K/W)	1.83	2.35	3.37	5.36
Weight kg/m ² 0.5/0.4 steel	9.5	9.9	10.7	12.3

KS1000 RW End Lap



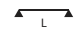

KS1000 RW Side Lap



Deflection Ratio

Pressure = Span/100 Suction = Span/100

Unfactored Load/Span Table (Use calculated design windload values unfactored)

SPAN CONDITION	Panel Thickness (mm)	Load Type	Uniformly Distributed Loads (kPa)															
			Span L in Metres															
			2.0	2.2	2.4	2.6	2.8	3.0	3.2	3.4	3.6	3.8	4.0	4.2	4.4	4.6	4.8	5.0
SINGLE SPAN Outer Sheet 0.5mm steel Inner Sheet 0.4mm steel	30	Pressure/ Suction	2.94	2.42	2.02	1.69	1.43	1.22	1.04	-	-	-	-	-	-	-	-	-
	40	Pressure/ Suction	3.46	2.93	2.50	2.14	1.85	1.60	1.39	1.22	1.07	-	-	-	-	-	-	-
	60	Pressure/ Suction	4.95	4.28	3.72	3.25	2.86	2.52	2.23	1.99	1.77	1.58	1.42	1.28	1.15	1.04	-	-
	100	Pressure/ Suction	9.39	8.22	7.24	6.41	5.70	5.09	4.56	4.10	3.69	3.34	3.02	2.75	2.50	2.28	2.08	1.91
DOUBLE SPAN Outer Sheet 0.5mm steel Inner Sheet 0.4mm steel	30	Pressure/ Suction	2.72	2.34	2.02	1.76	1.54	1.36	1.20	1.06	-	-	-	-	-	-	-	-
	40	Pressure/ Suction	2.91	2.54	2.23	1.98	1.76	1.57	1.41	1.27	1.15	1.04	-	-	-	-	-	-
	60	Pressure/ Suction	3.90	3.44	3.06	2.74	2.46	2.23	2.02	1.84	1.68	1.54	1.41	1.30	1.20	1.11	1.03	-
	100	Pressure/ Suction	7.17	6.36	5.69	5.13	4.64	4.22	3.86	3.54	3.25	3.00	2.78	2.57	2.39	2.22	2.07	1.93

For further technical information, please contact Kingspan Technical Services on (03) 358 7536

Kingspan Limited
 Tel 03 358 7536 Fax 03 358 7539
 Email infoNZ@kingspan.co.nz
 www.kingspan.co.nz

